



COMPANY PROFILE PT SAI INDONESIA



HISTORY



Let us distribute yours!

PT. SAI Indonesia, formerly PT Sari Ayu Indonesia, (established in 1982), is a nationwide logistics and distribution company focusing on beauty and personal care products as well as complementary products.

The Company started the business with 2 branches in Jakarta and Surabaya.

Currently operates 1 Distribution Center (DC) in Jakarta providing products to 18 branch offices, 2 Sub Branches, 20 sub distributors, and 4 sales points across Indonesia to cover modern and conventional customers in line with the Principals' marketing strategies.

PT. SAI Indonesia holds the ISO Certificate Indonesia in early 2012 for ISO implementation in its branches.



VISION & MISSION



Let us distribute yours!

VISION

To be the best local company in distribution and logistics provider nationwide.



MISSION

Distributing widerange of products to Indonesian people throughout the country as needed.

OUR CULTURE



Let us distribute yours!

SPIRIT

ATTITUDE

INTEGRITY

SAI



OUR STRENGTH



Let us distribute yours!

PT. SAI INDONESIA

has been a long player in distribution business **SINCE 1982**
Therefore the company understands the culture and the needs of Indonesian consumers, and has excellent relationships built with the trade (outlets). It makes PT. SAI Indonesia become a reliable partner to its Principals.



OUR COMMITMENT

THE COMPANY IS
COMMITTED
TO THE FUTURE INVESTMENTS AND
BUSINESS EXPANSION
AND MAKING JOIN EFFORTS WITH
BUSSINESS PARTNERS TO ACHIEVE
GOALS



Let us distribute yours!



SERTIFIKAT ISO 9001- 2015



Let us distribute yours!



Management
System
ISO 9001:2015



www.tuv.com
ID 9105081660

PBF & Medical Supplies Licenses



PEMERINTAH REPUBLIK INDONESIA
PERIZINAN BERBASIS RISIKO
IZIN : 81201048829370003

Berdasarkan Undang-Undang Nomor 6 Tahun 2023 tentang Penetapan Peraturan Pemerintah Pengganti Undang-Undang Nomor 2 Tahun 2022 tentang Cipta Kerja Menjadi Undang-Undang, Pemerintah Republik Indonesia memberikan Izin Pedagang Besar Farmasi kepada Pelaku Usaha berikut ini:

- | | |
|--|---|
| 1. Nama Pelaku Usaha | : PT SAI INDONESIA |
| 2. Nomor Induk Berusaha (NIB) | : 8120104882937 |
| 3. Alamat Kantor | : J. RAWA BAli II No. 5, KAWASAN INDUSTRI PULOGADUNG, Desa/Kelurahan Rawa Terate, Kec. Cakung, Kota Adm. Jakarta Timur, Provinsi DKI Jakarta, Kode Pos: 13930 |
| 4. Status Penanaman Modal | : PMDN |
| 5. No. Telepon | : 0214600044 |
| 6. Kode Klasifikasi Baku Lapangan Usaha Indonesia (KBLI) | : 46441 - Perdagangan Besar Obat Farmasi Untuk Manusia |
| 7. Lokasi Usaha | : J. Rawa BAli II No. 5, Jakarta Industrial Estate Pulogadung, Kota Adm. Jakarta Timur, Provinsi DKI Jakarta, Kode Pos: 13920 |
| 8. Status | : Telah memenuhi persyaratan |

Lampiran izin ini memuat daftar pernyataan dan/atau kewajiban sesuai dengan kode KBLI Pelaku Usaha dan merupakan bagian tidak terpisahkan dari dokumen izin yang dimaksud. Pelaku Usaha dengan izin tersebut di atas wajib menjalankan kegiatan usahanya sesuai dengan ketentuan peraturan perundang-undangan.

Diterbitkan tanggal: 26 September 2023

a.n. Menteri Kesehatan
Menteri Investasi/
Kepala Badan Koordinasi Penanaman Modal,



Ditandatangani secara elektronik

Dicetak tanggal: 6 Februari 2024

1. Dokumen ini diterbitkan sistem OSS berdasarkan data dari Pelaku Usaha, sehingga dalam sistem OSS, yang menjadi tanggung jawab Pelaku Usaha.
2. Dokumen ini bersifat sementara dan akan dilakukan perubahan sebagaimana mestinya.
3. Dokumen ini tidak menggantikan secara elektronik menggunakan sertifikat elektronik yang diterbitkan oleh BSE-BSSN.
4. Data lengkap Perizinan Berbasis Risiko dapat diperoleh melalui sistem OSS menggunakan link akses.



PEMERINTAH REPUBLIK INDONESIA
PERIZINAN BERBASIS RISIKO
IZIN : 81201048829370002

Berdasarkan Undang-Undang Nomor 6 Tahun 2023 tentang Penetapan Peraturan Pemerintah Pengganti Undang-Undang Nomor 2 Tahun 2022 tentang Cipta Kerja Menjadi Undang-Undang, Pemerintah Republik Indonesia memberikan Izin Distributor Alat Kesehatan kepada Pelaku Usaha berikut ini:

- | | |
|--|---|
| 1. Nama Pelaku Usaha | : PT SAI INDONESIA |
| 2. Nomor Induk Berusaha (NIB) | : 8120104882937 |
| 3. Alamat Kantor | : J. RAWA BAli II No. 5, KAWASAN INDUSTRI PULOGADUNG, Desa/Kelurahan Rawa Terate, Kec. Cakung, Kota Adm. Jakarta Timur, Provinsi DKI Jakarta, Kode Pos: 13930 |
| 4. Status Penanaman Modal | : PMDN |
| 5. No. Telepon | : 0214600044 |
| 6. Kode Klasifikasi Baku Lapangan Usaha Indonesia (KBLI) | : 46691 - Perdagangan Besar Alat Laboratorium, Alat Farmasi Dan Alat Kedokteran Untuk Manusia |
| 7. Lokasi Usaha | : J. Rawa BAli II No. 5, Jakarta Industrial Estate Pulogadung, Kota Adm. Jakarta Timur, Provinsi DKI Jakarta, Kode Pos: 13920 |
| 8. Status | : Telah memenuhi persyaratan |

Lampiran izin ini memuat daftar pernyataan dan/atau kewajiban sesuai dengan kode KBLI Pelaku Usaha dan merupakan bagian tidak terpisahkan dari dokumen izin yang dimaksud. Pelaku Usaha dengan izin tersebut di atas wajib menjalankan kegiatan usahanya sesuai dengan ketentuan peraturan perundang-undangan.

Diterbitkan tanggal: 19 Mei 2023

a.n. Menteri Kesehatan
Menteri Investasi/
Kepala Badan Koordinasi Penanaman Modal,



Ditandatangani secara elektronik

Dicetak tanggal: 6 Februari 2024

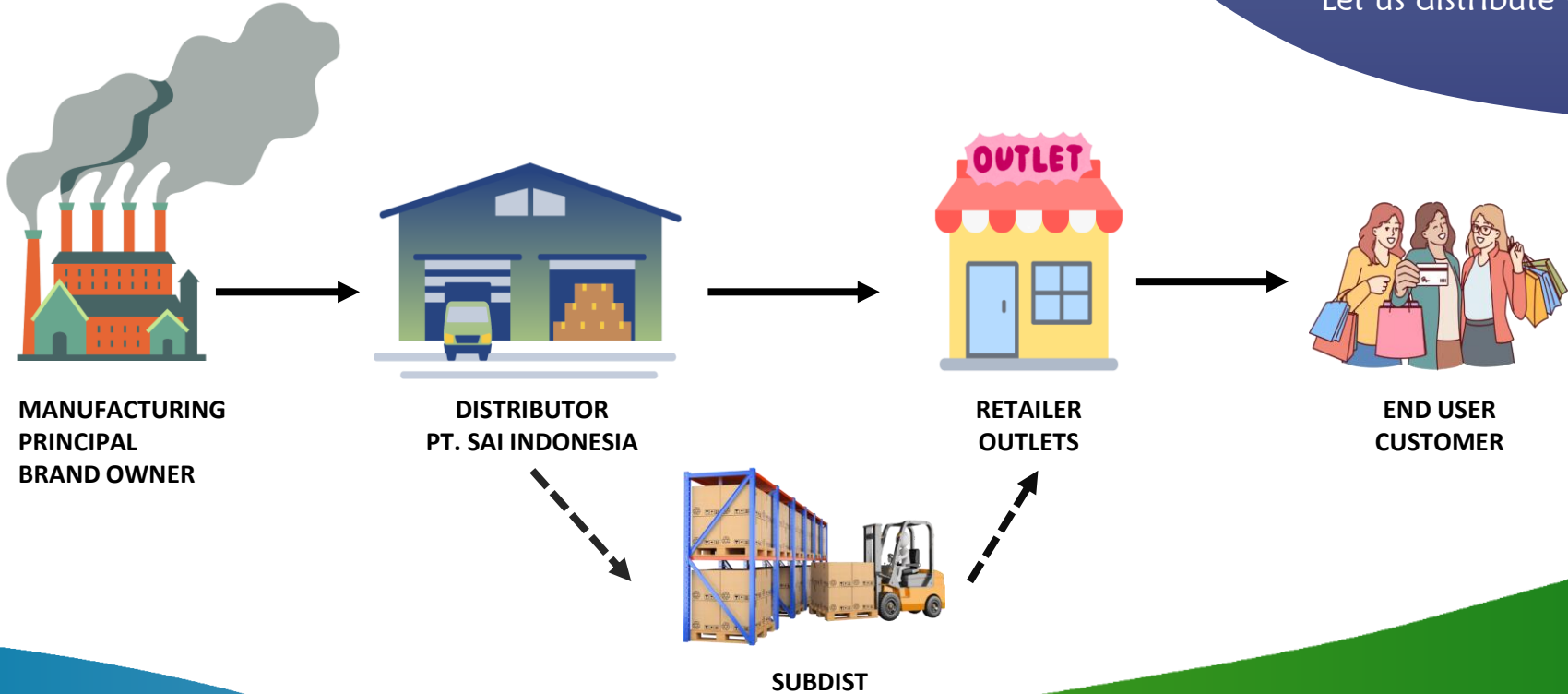
1. Dokumen ini diterbitkan sistem OSS berdasarkan data dari Pelaku Usaha, sehingga dalam sistem OSS, yang menjadi tanggung jawab Pelaku Usaha.
2. Dokumen ini bersifat sementara dan akan dilakukan perubahan sebagaimana mestinya.
3. Dokumen ini tidak menggantikan secara elektronik menggunakan sertifikat elektronik yang diterbitkan oleh BSE-BSSN.
4. Data lengkap Perizinan Berbasis Risiko dapat diperoleh melalui sistem OSS menggunakan link akses.



FLOW OF BUSINESS



Let us distribute yours!



SAI BRANDS



Let us distribute yours!



PRINCIPAL'S PRODUCTS – BEAUTY & PERSONAL CARE

 **kojie•san®**



PT. UICCP INDONESIA
Skin Care



PT. FINE TODAY INDONESIA
Skincare, Face Wash



PT. SEMESTA DISTRIBUSI INDONESIA
(SOCIOLLA GROUP)
Skin Care



PT. KIMIA FARMA TBK
Personal Care & Cosmetics

PRINCIPAL'S PRODUCTS – BEAUTY & PERSONAL CARE



PT. WAHANA KOSMETIKA INDONESIA

Skin Care & Cosmetics



S SOMETHINC

PT. ROYAL PESONA INDONESIA

Skin Care & Cosmetics



PT. SINERGI MULTI DISTRINDO

Skin Care & Cosmetics

SCÓRA
Facetology



PT. ORE INTERNATIONAL DISTRIBUTION

Skin Care

PRINCIPAL'S PRODUCTS – BEAUTY & PERSONAL CARE

PINKFLASH

FOCALSKIN

FOCALLURE
color the life



PT. FCL INTERNASIONAL INDONESIA

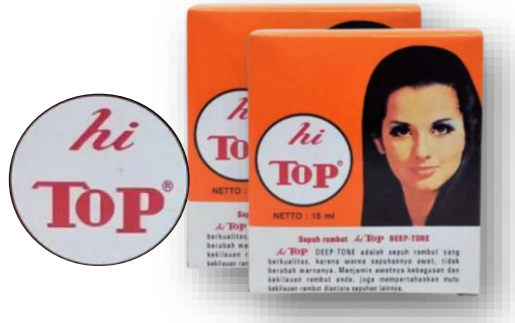
Skin Care & Cosmetics



PT. BEAUTY SOURCE INDONESIA (SANIYE)

Cosmetics

PRINCIPAL'S PRODUCTS – BEAUTY & PERSONAL CARE



PT. BERDIKARI PUTRA JAYA SEJAHTERA

Hair Color



PT. HOYU INDONESIA

Hair Color

PRINCIPAL'S PRODUCTS – BEAUTY & PERSONAL CARE



PT. ERA VENTURA INDONESIA

Shower Cream, Body Lotion



 **SEKAWAN**
— COSMETICS —

PT. SEKAWAN KOSMETIK WASANTARA

Skin Care & Body Care



PT. CITRA USAHA LAMINDO

Accessories and Personal Care



PT. ENZYM BIOTEKNOLOGI INTERNUSA

Mouth Care

PRINCIPAL'S PRODUCTS – BEAUTY & PERSONAL CARE



PT. PRISKILA PRIMA MAKMUR
Personal Care

morris
EAU DE PARFUM



PT. AROMA PRIMA LIVINDO
Personal Care



PT. GRIFFIN PRIMA ABADI
Personal Care



PT. EASTON KALERIS INDONESIA
Personal Care



PT. WIREHE SUKSES BERSAMA

Softlenses

PRINCIPAL'S PRODUCTS – BABY, MOMS & KIDS



Let us distribute yours!



PT. TAK TERHINGGA SEPANJANG MASA

Baby care



PT. ANUGERAH SEJATI LARAS

Baby Care



PT. ETERCON PHARMA

Baby Care



PT. AMAN INDAH MAKMUR

Baby Care

PRINCIPAL'S PRODUCTS – BABY, MOMS & KIDS



Let us distribute yours!



PT. Inovasi Teknologi Untung Berkah

Mom Skincare & Baby Food



PT. Sinergi Multi Distrindo (PIGEON BABY)

Baby Care



PT. HEAVENLY NUTRITION INDONESIA

Snacks & Beverages

PRINCIPAL'S PRODUCTS – HOUSEHOLDS & HOMECARE



Let us distribute yours!



PT UNITAMA SARI MAS

Household (air freshener, toiletries)



CV. JAYA WIJAYA NAGARA

Household



CV. MULIA MAS CEMERLANG
(PEACE KARBOL SEREH)

Household



PT. UICCP INDONESIA

Household (Detergent)

PRINCIPAL'S PRODUCTS – MEDICAL SUPPLIES



Let us distribute yours!



PT. Omron Healthcare Indonesia

Healthcare – Medical Supplies



PT. Sinergi Multi Distrindo (MATTEL)

Toys



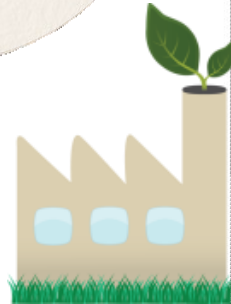
TRADE MARKETING MANAGEMENT



DISTRIBUTION



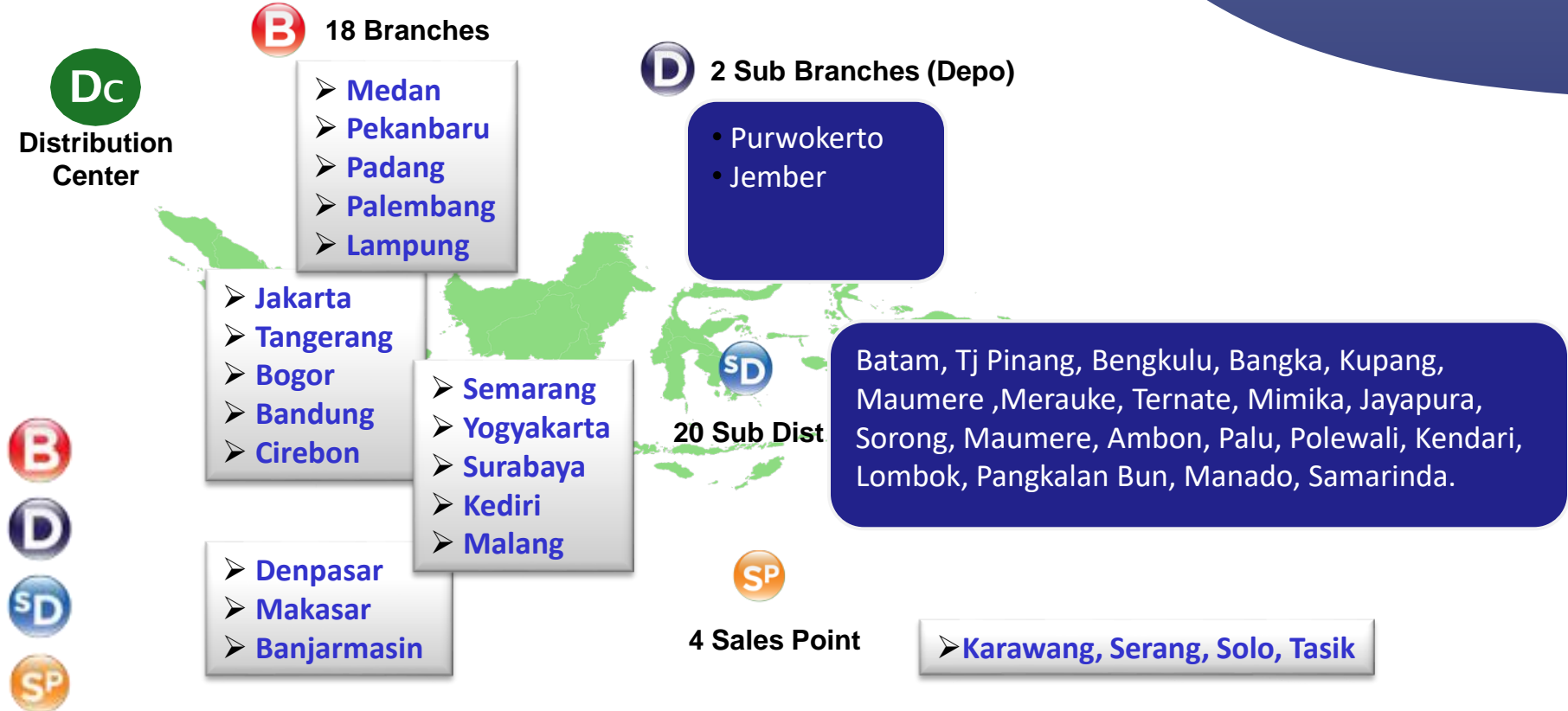
CHANNEL MANAGEMENT



SAI BRANCHES



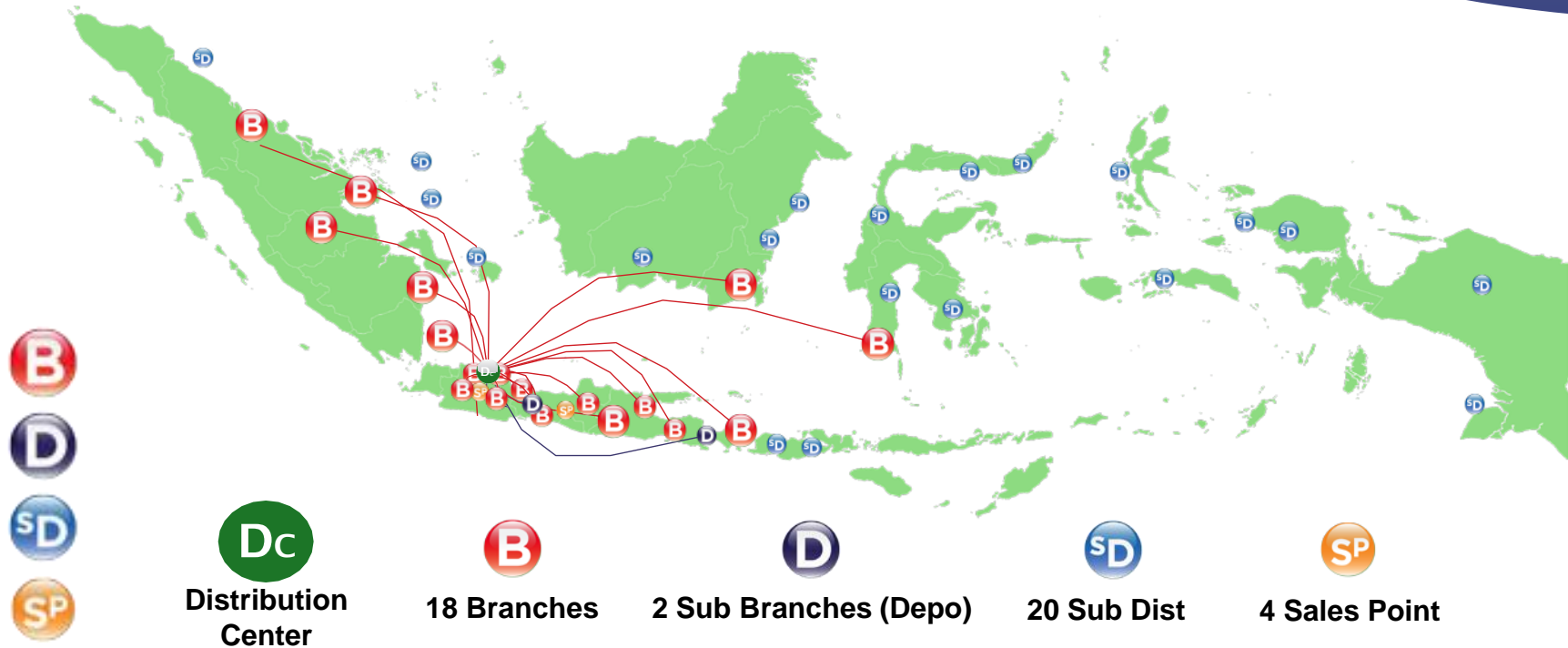
Let us distribute yours!



SAI BRANCHES



Let us distribute yours!



FLEETS AND SALES FORCES



Let us distribute yours!

Approximately
45.000
Registered Outlets
With **25.000**
Active Outlets

150
salesforces

More Than
100 delivery vans



WAREHOUSE FACILITIES



Let us distribute yours!

NO	CABANG	WAREHOUSE SPACE EXISTING	GEDUNG	
			BY PCS	BY PALLET
1	JAKARTA & DC	1.800	5.625.000	1.305
2	BOGOR	1.400	4.375.000	1.015
3	TANGERANG	1.530	4.781.250	1.109
4	BANDUNG	750	2.343.750	544
5	CIREBON	600	1.875.000	435
6	TASIKMALAYA	840	2.625.000	609
7	SEMARANG	756	2.362.500	548
8	YOGYAKARTA	1.080	3.375.000	783
9	PURWOKERTO	288	900.000	209
10	SURABAYA	1.100	3.437.500	797
11	KEDIRI	396	1.237.500	287
12	MALANG	1.152	3.600.000	835
13	JEMBER	975	3.046.875	707
14	DENPASAR	1.450	4.531.250	1.051
15	BANDAR LAMPUNG	585	1.687.500	391
16	PALEMBANG	648	2.025.000	470
17	PEKANBARU	540	1.687.500	391
18	PADANG	432	1.350.000	313
19	MEDAN	540	1.687.500	391
20	MAKASSAR	1.440	4.500.000	1.044
21	BANJARMASIN	250	781.250	181

- ❑ Main distribution center warehouse located at Pulo Gadung, Jakarta Timur
- ❑ Thousands of pallet position capacity.
- ❑ Safe handling supported by reach trucks,
- ❑ Tri-Lateral Stacker , shrink pack and stripping machines
- ❑ Front distribution center located around Indonesia
- ❑ Electronic data processing by New SQL platform and WMS System





**Online Salesman
Order**



**WMS
System**



**SAI Data
Center (Server)**

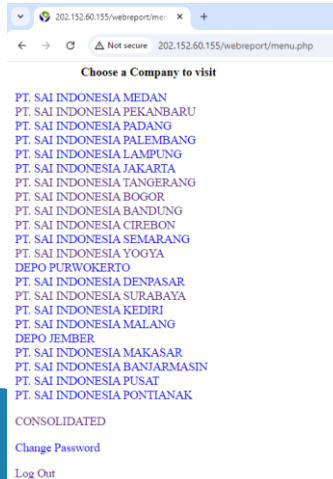


**Web Report
SAI**

IT FACILITIES



1. Tampilan Login Webreport



2. Pilihan Cabang Terkait

TAMPILAN WEB REPORT

Consolidated Reports

[Service Level \(Invoice\) by Customer by SKU Consolidated](#)
[Sales/Return/Stock \(Invoice\) Consolidated](#)
[Time Series Konsolidasi by Cabang by Outlet](#)
[Time Series Konsolidasi by Outlet by SKU](#)
[Time Series Konsolidasi by Branch by SKU](#)
[Service Level Consolidated Head Office To Branch By Date](#)
[Summary Order vs Realisasi by Cabang by Jenis Outlet](#)
[Sales Consolidated \(invoice\) by Customer by SKU](#)
[Sales Achievement Consolidated \(Invoice\) by Branch](#)
[GSAR \(Invoice\) Consolidated by Branch by Principal](#)

[Back to Branch Selection](#)

3. Pilihan Consolidated

Note:
* Click on the Quantity to display detailed information of the specified brand
* Click on the No. SKU to display detailed information for selected Document Number (All Brand)

BRANCH	No. PO	No. INVOICE	DOC. DATE	CUSTOMER ID	CUSTOMER NAME	STORE NAME	TRADE	SUB TRADE	ORDER QTY	REAL QTY	ORDER (RM)	REAL (RM)	RO (%)
SAI	pda	886302	2024-10-03	0302810000	QUEEN COSMETIK	QUEEN COSMETIK	GENERAL TRADE	GROSSER	48	48	314,400	314,400	100.00
SAI	PDA	886602	2024-10-04	0104920000	WASDI BATU COSMETIK	CANTER 1 COSMETIK	GENERAL TRADE	RETAIL	60	60	318,000	318,000	100.00
SAI	PDA	886700	2024-10-04	0106520000	LANTOSAN	LANTOSAN	GENERAL TRADE	RETAIL	36	36	190,800	190,800	100.00
SAI	PDA	886713	2024-10-04	0105641000	TOKO ALDI	TOKO ALDI	GENERAL TRADE	RETAIL	12	0	63,600	0	0.00
SAI	ANGKE	886846	2024-10-08	0135232000	PT TIRTA MANDIRI GEMILANG	PT TIRTA MANDIRI GEMILANG	GENERAL TRADE	RETAIL	36	36	190,800	190,800	100.00
SAI	PDA	886967	2024-10-09	0102420000	TERANG TO	TERANG TO	GENERAL TRADE	RETAIL	12	12	78,600	78,600	100.00
SAI	PDA	886983	2024-10-09	0103780000	HOLLY COSMETIC & BODY CARE	HOLLY COSMETIC & BODY CARE	GENERAL TRADE	RETAIL	18	18	132,600	132,600	100.00
SAI	PDA	887042	2024-10-10	0103816000	TOKO AYA	TOKO AYA	GENERAL TRADE	RETAIL	12	12	63,600	63,600	100.00
SAI	PDA	887043	2024-10-10	0104821000	TOKO ALI KOSMETIK	TOKO ALI KOSMETIK	GENERAL TRADE	RETAIL	12	12	63,600	63,600	100.00
SAI	PDA	887044	2024-10-10	0104914000	ABOTIK NAGARA	ABOTIK NAGARA	GENERAL TRADE	RETAIL	12	12	63,600	63,600	100.00

4. Tampilan Service Level

Report Sales Return by Outlet week 5 of Oct

[Back to Menu](#)

Choose Date Range:

From Date

To Date

[Export to Excel](#)

5. Data pada Webreport dapat diekspor menjadi format Excel

DISTRIBUTION ON LINE

Order Application

MitraSAI



Katalog Produk



Menjadi Mitra
Kami

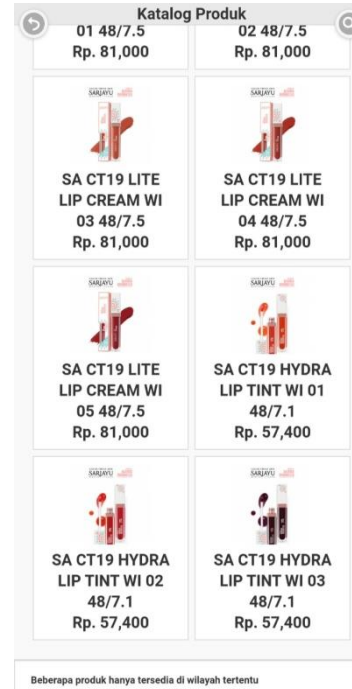
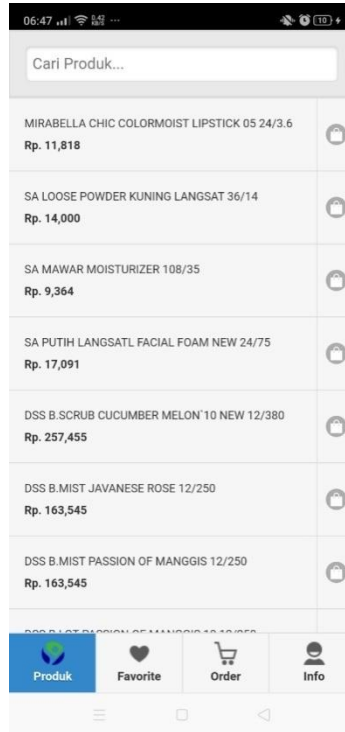


Supplier Kami



Login Mitra

LOGISTIC & DISTRIBUTION SERVICE



DISTRIBUTION ON LINE



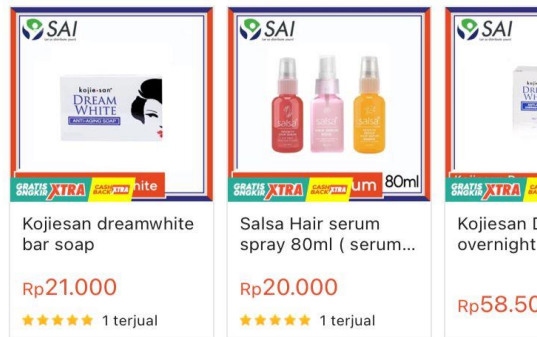
SAI Let us distribute yours!

ONLINE SHOP

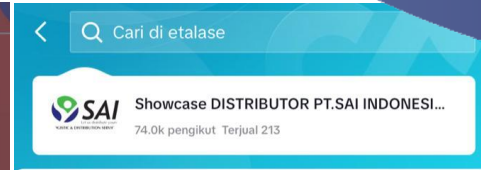


Toko Produk Kategori Live

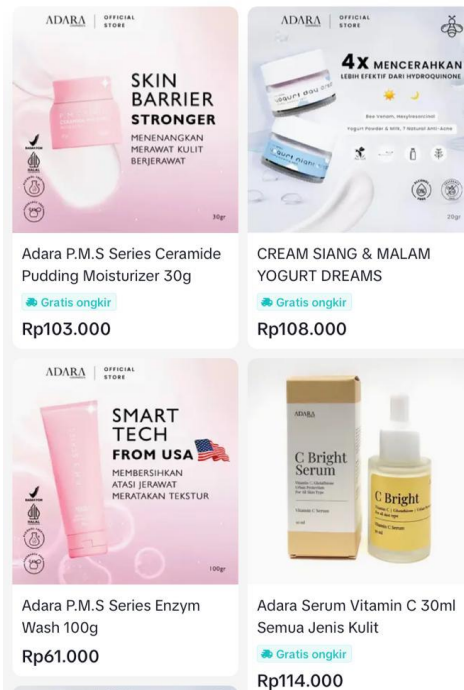
Kamu Mungkin Suka



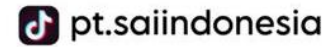
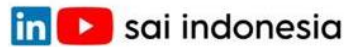
Produk Terlaris



Pilihan kreator Direkomendasikan Terlaris Harga



THANK YOU



 www.sai-indonesia.co.id

PT. SAI INDONESIA

Kawasan Industri Pulo Gadung Jl.Rawa Bali II/05 RW 03
Rawa Terate Kec Cakung Kota Jakarta Timur
Daerah khusus Ibu kota Jakarta 13920

